

## PVD Coatings for Turning

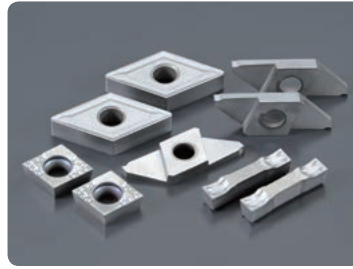
### NEW ST4 ST-Coat



**Best grade for 304SS**

- Stainless steel

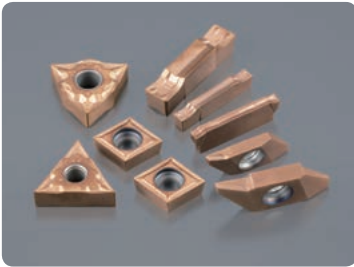
### QM3 Q-Coat



**Best wear resistance**

- Stainless steel
- Carbon steel
- Alloy steel

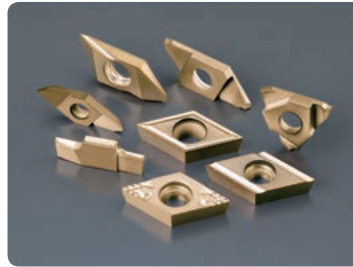
### DM4 DM-Coat



**Best heat resistance**

- Heat resistant alloy
- Stainless steel
- Hardened material

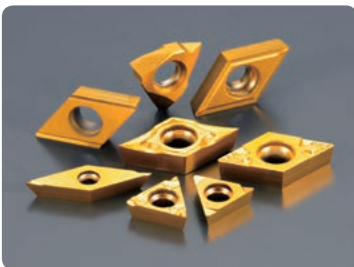
### DT4 DT-Coat



**Best balance of heat resistance and sharp edges**

- Titanium alloy
- Heat resistant alloy
- Stainless steel
- Hardened material

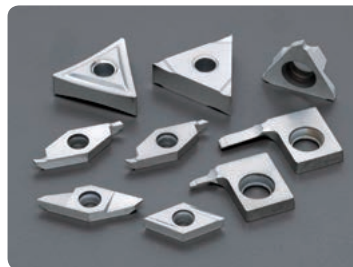
### TM4 TM-Coat



**Best balance of wear resistance and adhesion resistance**

- For small part machining in general

### VM1 V-Coat



**Best edge sharpness**

- Titanium alloy
- Non-ferrous material
- Stainless steel
- Plastic

### ZM3 Z-Coat



**Best adhesion resistance**

- General purpose machining

### Coating Specifications

	ST-Coat	Q-Coat	DM-Coat	DT-Coat	TM-Coat	V-Coat	Z-Coat
Thickness	Thick	Thick	Thick	Thin	Thin	Thin	Thick
Wear Resistance	○	◎	○	○	○	○	○
Heat Resistance	○		◎	◎			○
Adhesion Resistance	○				○		◎
Edge Sharpness				○	○	◎	
Composition	CrAlN	TiCN	Multilayer	Multilayer	Multilayer	TiCN	TiN

◎1st choice ○2nd choice