

# NTK's Recommendation for Swiss Tooling

## Specific Application

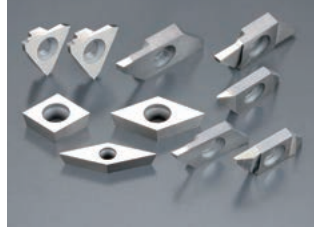
For up to .200" diameter material

CSV Series



PEEK / Non-ferrous material

KM1 insert



Double / Triple lead Screw

Thread Whirling



HEXALOBULAR / HEX / SQUARE socket

Shaper Duo



## General Tooling for Popular Materials

- Titanium
- 304SS

- Ti-6Al-4V
- 316SS

- Carbon steels
- Alloy steels

- Cobalt Chrome
- HRSA materials

## Front Turning

General Purpose

DM4-YL



Splash Series

Y-axis with Coolant Through



- DM4 has excellent heat resistance. It is the best grade to machine for Titanium Alloys, Cobalt Chrome, and HRSA materials.
- YL chipbreaker is designed for both sharpness and chip control. It can hold dimensions very well and evacuate chips smooth.
- AMX chipbreaker is optimized for very small DOC operations. It can perform very well in thin chip control situations.
- Use with a coolant through tool holder to help with chip evacuation. Y-axis coolant through toolholder is the best solution for chip control problems.

Up to .020 DOC

DM4-AMX



## Cut-Off

Up to .472"

DM4-CTP-CX



Splash series



- CTP/CTPA style cut-off tool is a best-seller in the Swiss market. They have excellent rigidity and sharpness. Now NTK added the CX chipbreaker to them. 3D shaped CX chipbreaker can control chips extremely well.
- Use with coolant through toolholder for better chip evacuation.
- CTP style is designed for up to .472" material and CTPA is for up to .630".

Up to .630"

DM4-CTPA-CX



Up to 1.00"

CUT DUO



Splash series



- NTK recently added another coolant through cut-off toolholder for larger diameter materials.
- CTPD-OH toolholder can cut up to 1" materials and can control chips very well.

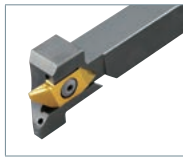
## Back Turning

General Purpose

DM4-TBP / TBPA-BM



Splash Series



Y-axis with Coolant through



- NTK's TBP/TBPA back turning tools are solid and can provide stable machining even with heavy DOC operations.
- Now, NTK added a 3D chipbreaker named BM to this series. BM chipbreaker can manage chip direction. Just one pass is needed to get excellent face/OD finish.
- Use with coolant through tool holder to help with chip evacuation and the Y-axis coolant through toolholder is the best solution for chip problems.

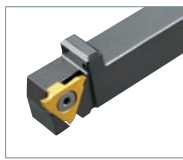
## Grooving

General Purpose

DM4-GX



Splash Series



Y-axis with Coolant through



- NTK is expanding its triangle style grooving tools. Now NTK accommodates wide grooving widths from .012" to .125".
- GX chipbreaker can control chips very well, not only for grooving but also side-turning operations.
- Use with coolant through tool holder to help with chip evacuation and the Y-axis coolant through toolholder is the best solution for chip problems.

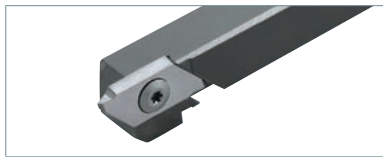
## Threading

General Purpose

QM3-TTP



TTP



- NTK's side-clamping TTP inserts are rigid and produces high quality good threads. Various lineups are available for each specific threading operations.
- QM3 has good wear resistance and toughness and can cut most materials.

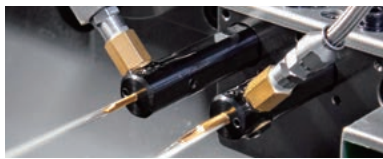
## ID Boring

General Purpose

STICK DUO Hyper



STICK DUO SPLASH



- Stick Duo Splash are coolant through sleeves for ID operations. NTK has a variety of ID tooling inserts, bars for ID boring, ID back turning, ID grooving and ID threading to use with Stick Duo Splash.
- The sleeves are equipped with an adjustable overhang mechanism that allow you to index bars easily without length adjustment.



Mogul Bar



- Mogul Bar is a series name for boring tools with indexable inserts. The series starts from .197" minimum bore diameter and ID and use with F-style chipbreaker which makes chip evacuate backward.
- They include a coolant through system that ensures better chip evacuation.

## Endmill

General Purpose

DM4-BL



Indexable Endmill



- NTK has a variety of indexable type endmill tools for Swiss machines. The big head endmills can cut in close proximity to the Guide-bushing and provide excellent rigidity. Due to the big diameter, you can also run faster than small diameter endmills.