

N-Swiss JOINT

Modular Type | Quick-change tool series for automatic lathes



Reduces tool change and set-up times.

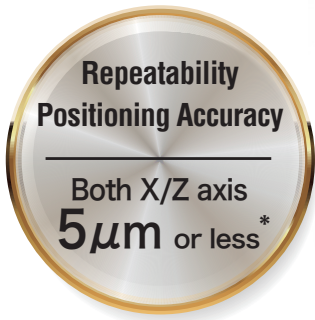
The easy-to-use mechanism makes it easy for anyone to achieve consistent repeatability



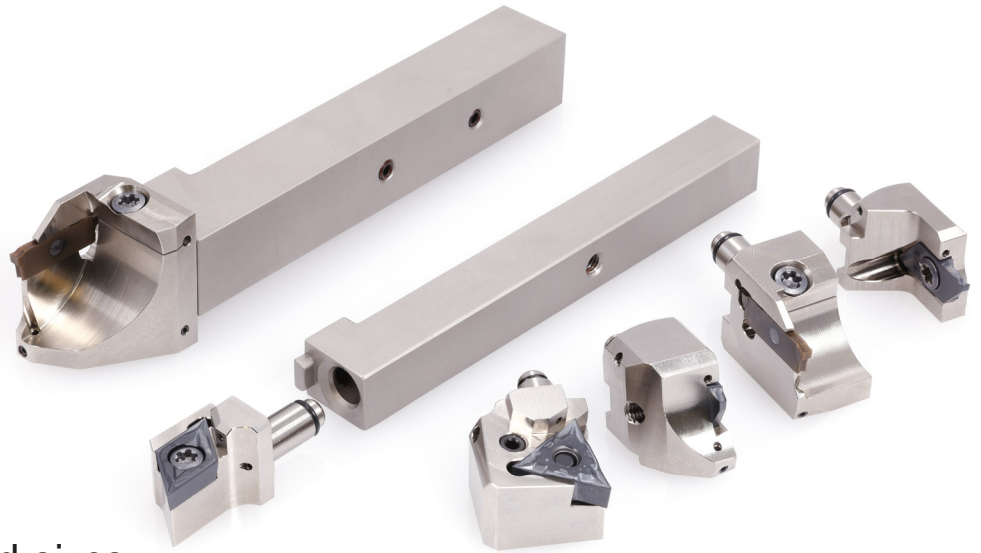
All application heads can be mounted on the same shank and shared. The wide range of uses significantly improves work efficiency.

N-Swiss JOINT

Modular Type | Quick-change tool series for automatic lathes

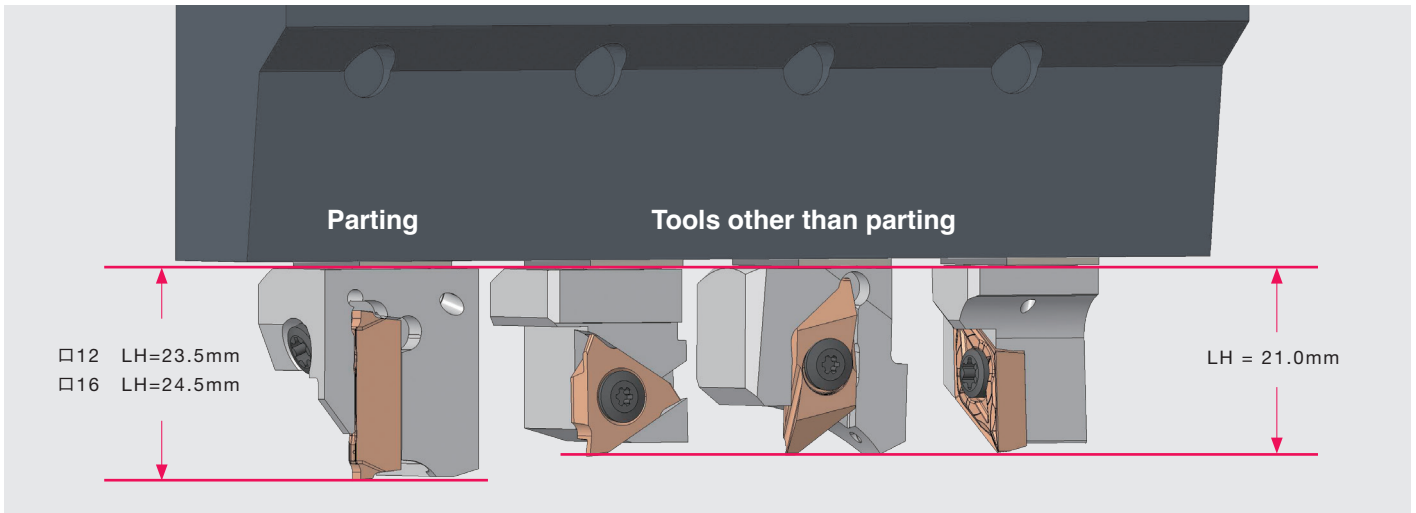


*The head, shank, and insert corner are identical during measurement.

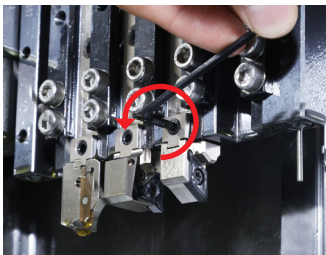


Standardization of head sizes

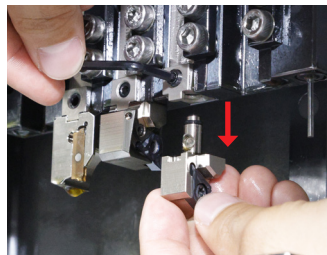
All heads are set to have the same cutting edge position
(The shank size and numerical values for parting tools and other tools differ)



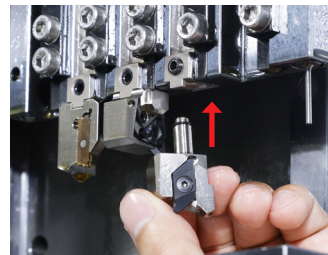
| Attachment / Detachment Method



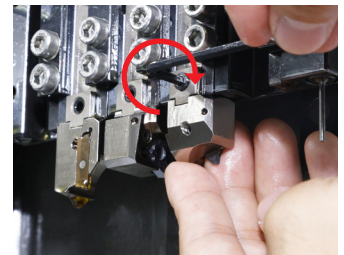
① Loosen the screw



② The head can be removed without fully detaching the screw



③ Insert the head with the replaced insert.

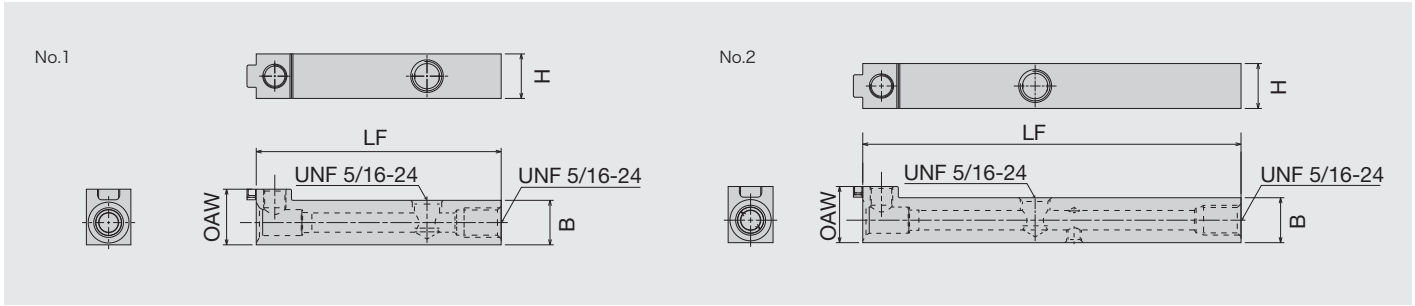


④ Tighten the screw on the side while holding the head.



⑤ Tool replacement completed.

Shanks



Item Number	Internal coolant	H	B	LF	OAW	Torque *	Figure
QC-1212F-OH		12	12	65	15	3	1
QC-1212X-OH2 ⁽¹⁾		12	12	100	15	3	2

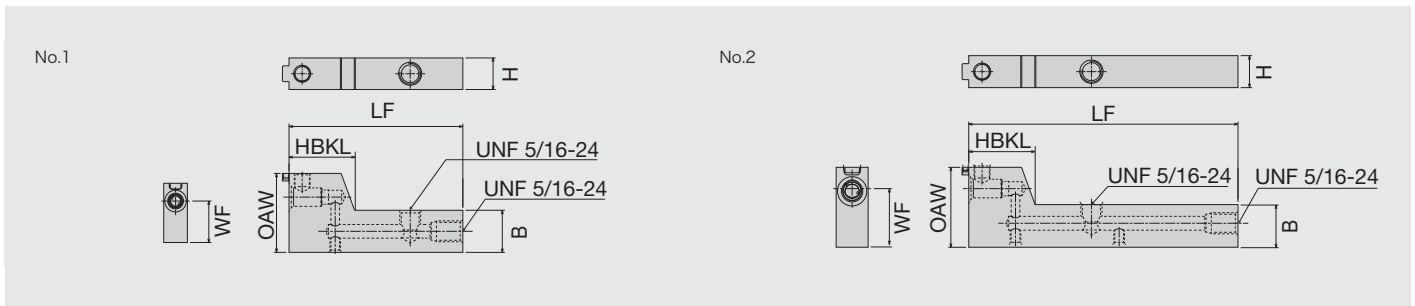
⁽¹⁾ OH2 :Compatible with direct coolant supply from the machine's tool post to the tool.

*Torque : Recommended clamping torque (N·m)

Spare parts



Item Number	Screw	Screw	Screw	Wrench	Wrench	Wrench
QC-1212F-OH	M6*0.5-TSC	-	5/16UNF-TSC	-	TR-3	TR-4
QC-1212X-OH2	M6*0.5-TSC	SSM4*6-T	5/16UNF-TSC	TR-2	TR-3	TR-4



Type	Item Number	Internal coolant	H	B	LF	OAW	WF	HBKL	Torque *	Figure
15mm Shift Shank	QC-1216F-F15-OH		12	16	65	30	21	25	3	1
15mm Shift Shank	QC-1216X-F15-OH2 ⁽¹⁾		12	16	100	30	21	25	3	2

Shift Shank : By shifting the cutting edge position, machining can be performed without the workpiece detaching from the guide bush. This makes it easier for coolant to reach the cutting point, improving chip control.

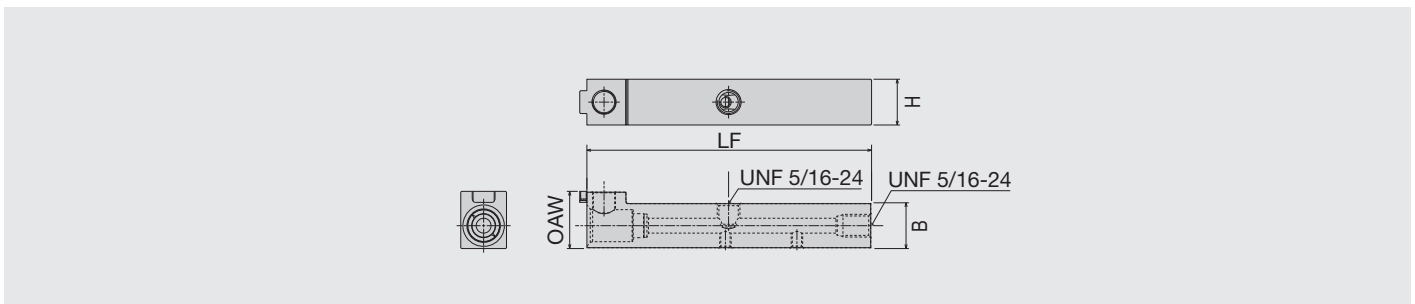
⁽¹⁾ OH2 :Compatible with direct coolant supply from the machine's tool post to the tool.

*Torque : Recommended clamping torque (N·m)

Spare parts



Item Number	Screw	Screw	Screw	Wrench	Wrench	Wrench
QC-1216F-F15-OH	M6*0.5-TSC	-	5/16UNF-TSC	-	TR-3	TR-4
QC-1216X-F15-OH2	M6*0.5-TSC	SSM4*6-T	5/16UNF-TSC	TR-2	TR-3	TR-4



Type	Item Number	Internal coolant	H	B	LF	OAW	Torque *
Shank	QC-1616X-OH2 ⁽¹⁾		16	16	99	20	8.5

⁽¹⁾ OH2 :Compatible with direct coolant supply from the machine's tool post to the tool.

*Torque : Recommended clamping torque (N·m)

Spare parts



Item Number	Screw	Screw	Screw	Wrench	Wrench	Wrench
QC-1616X-OH2	M8*0.5-TSC	SSM4*6-T	5/16UNF-TSC	TR-2	TR-4	TR-5

Heads

Front turning

Item Number	Internal coolant	H	B	LH	HF	WF	Insert	Applicable shank size
QC12-SDJCR11-F02-OH		12	12	21.0	12	2.0	DC..11T3..	QC-12..

Front turning

Item Number	Internal coolant	H	B	LH	HF	WF	Insert	Applicable shank size
QC12-SCLCR09-F02-OH		12	12	21.0	12	2.0	CC..09T3..	QC-12..

Front turning

Item Number	Internal coolant	H	B	LH	HF	WF	Insert	Applicable shank size
QC12-SVJCR11-F02-OH		12	12	21.0	12	2.0	VC..1103..	QC-12..

Spare parts



Item Number	O-Rings	Screw	Wrench	Wrench
QC12-SDJCR11-F02-OH	OR-450*10	LRIS-4*10	LLR-25S	-
QC12-SCLCR09-F02-OH	OR-450*10	LRIS-4*10	LLR-25S	-
QC12-SVJCR11-F02-OH	OR-450*10	LRIS-2.5*7	-	CLR-15S

Front turning

Item Number	Internal coolant	H	B	LH	HF	WF	Insert	Applicable shank size
QC12-PTXNR16-OH		12	12	21.0	12	0.0	TN..1604..	QC-12..

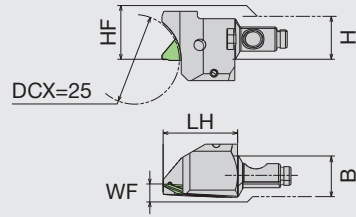
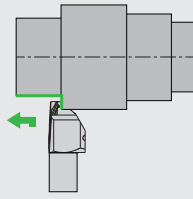
Spare parts



Item Number	O-Rings	Lever	Screw	Wrench
QC12-PTXNR16-OH	OR-450*10	LCL33N	LCS33	LW-2

Heads

Back Turning



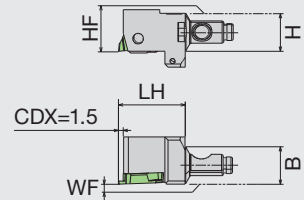
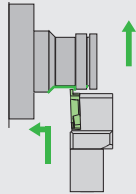
Item Number	Internal coolant	H	B	LH	HF	WF	Insert	Applicable shank size
QC12-TBPR-OH		12	12	21.0	12	3.5	TBP..R..	QC-12..

Spare parts



Item Number	O-Rings	Screw	Wrench
QC12-TBPR-OH	OR-450*10	LRIS-4*12PW	CLR-15S

Grooving



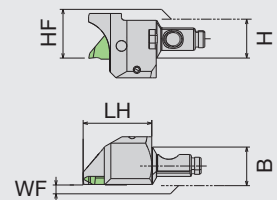
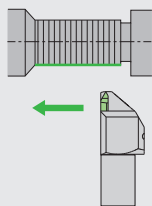
Item Number	Internal coolant	H	B	LH	HF	WF	Insert	Applicable shank size
QC12-GTTR00-OH		12	12	21.0	12	0.0	GT..32..R..	QC-12..

Spare parts



Item Number	O-Rings	Screw	Wrench
QC12-GTTR00-OH	OR-450*10	LR-S-4*10PW	CLR-15S

Threading



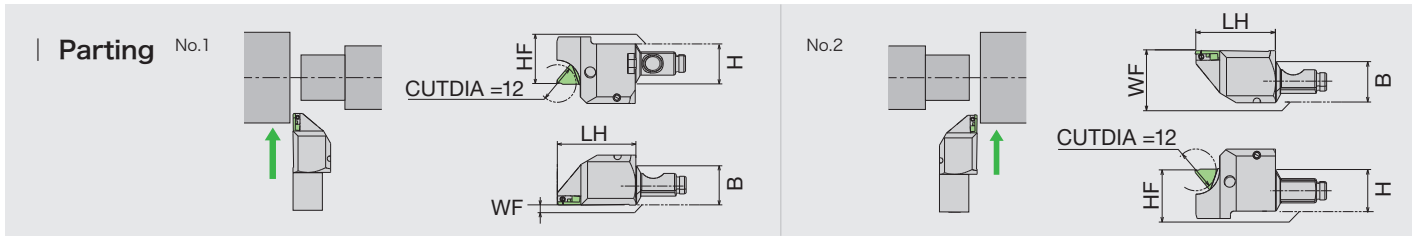
Item Number	Internal coolant	H	B	LH	HF	WF	Insert	Applicable shank size
QC12-TTPR-OH		12	12	21.0	12	0.2	TTP..R..	QC-12..

Spare parts

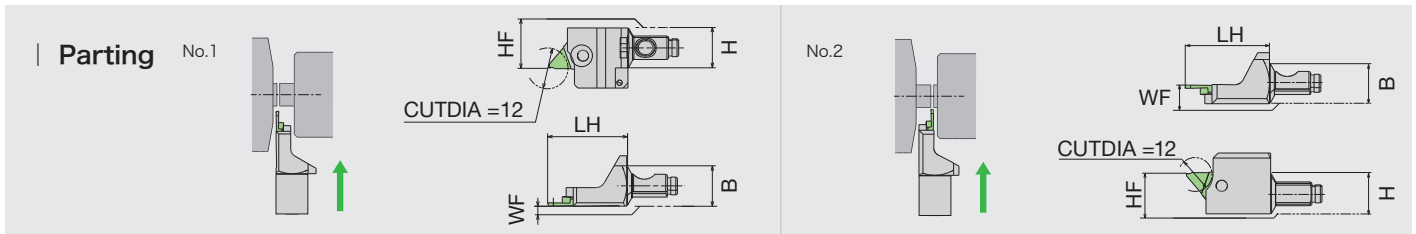


Item Number	O-Rings	Screw	Wrench
QC12-TTPR-OH	OR-450*10	LRIS-4*12PW	CLR-15S

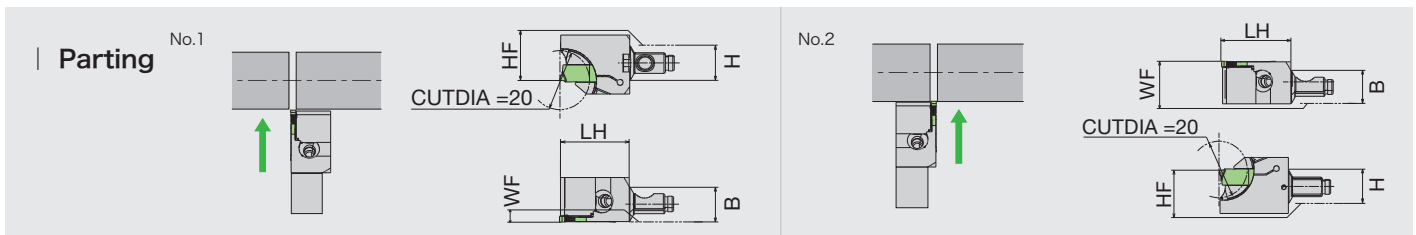
Heads



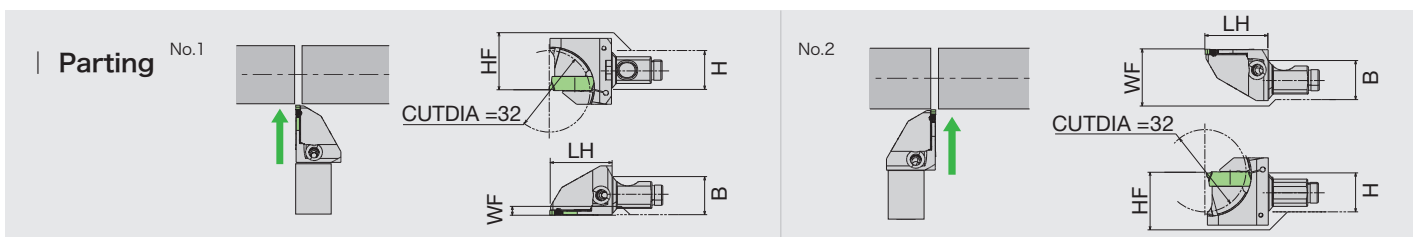
Item Number	Internal coolant	H	B	LH	HF	WF	Insert	Applicable shank size	Figure
QC12-CTPR-OH		12	12	23.5	12	0.0	CTP..R..	QC-12..	1
QC12-CTPL-OH		12	12	23.5	12	15.0	CTP..L..	QC-12..	2



Item Number	Internal coolant	H	B	LH	HF	WF	Insert	Applicable shank size	Figure
QC12-CTPR-SUB-OH		12	12	23.5	12	0.0	CTP..R..	QC-12..	1
QC12-CTPL-SUB-OH		12	12	23.5	12	5.5	CTP..L..	QC-12..	2



Item Number	Internal coolant	H	B	LH	HF	WF	Insert	Applicable shank size	Figure
QC12-CTDPR-20D20-OH		12	12	23.5	12	0.2	CTDP20..	QC-12..	1
QC12-CTDPL-20D20-OH		12	12	23.5	12	15.2	CTDP20..	QC-12..	2



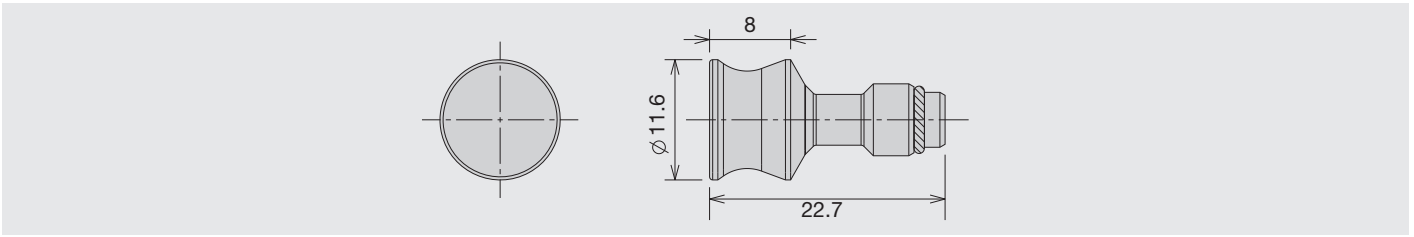
Item Number	Internal coolant	H	B	LH	HF	WF	Insert	Applicable shank size	Figure
QC16-CTDPR-20D32-OH		16	16	24.5	16	0.2	CTDP20..	QC-16..	1
QC16-CTDPL-20D32-OH		16	16	24.5	16	20.2	CTDP20..	QC-16..	2

Spare parts

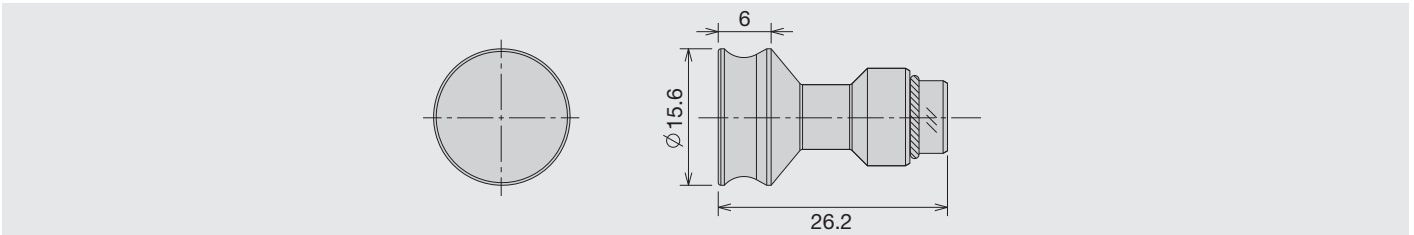


Item Number	O-Rings	Screw	Screwdriver	Wrench
QC12-CTPR-OH	OR-450*10	LRIS-4*12PW	CLR-15S	-
QC12-CTPL-OH	OR-450*10	LRIS-4*12PW	CLR-15S	-
QC12-CTPR-SUB-OH	OR-450*10	LRIS-4*5	-	LLR-25S
QC12-CTPL-SUB-OH	OR-450*10	LRIS-4*5	-	LLR-25S
QC12-CTDPR-20D20-OH	OR-450*10	LRIS-4*12	-	LLR-25S
QC12-CTDPL-20D20-OH	OR-450*10	LRIS-4*12	-	LLR-25S
QC16-CTDPR-20D32-OH	OR-750*10	LRIS-4*12	-	LLR-25S
QC16-CTDPL-20D32-OH	OR-750*10	LRIS-4*12	-	LLR-25S

Stopper By attaching a stopper to the unused shank, the coupling part is protected, and coolant discharge from the shank is prevented.

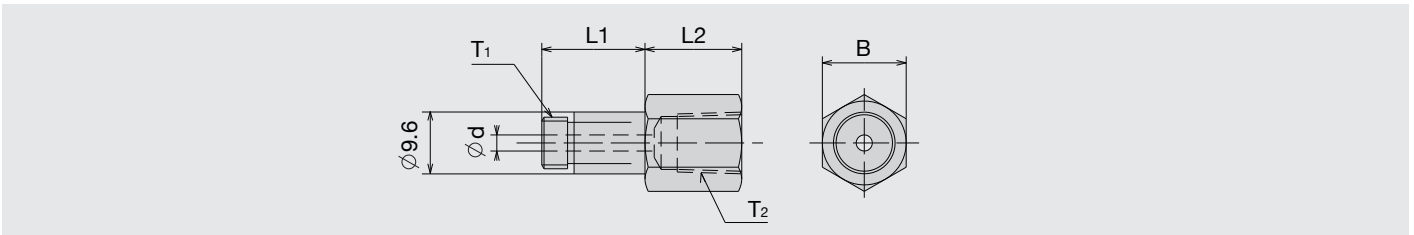


Item Number	O-Rings	Applicable shank size
QC12-STOPPER-PLUG	OR-450*10	QC12



Item Number	O-Rings	Applicable shank size
QC16-STOPPER-PLUG	OR-750*10	QC16

Thread conversion adapter When using conventional hoses and fittings, please use a threaded adapter.



Item Number	T ₁	T ₂	L1	L2	φd	B
SCJ-5/16-RC1/8-L	5/16-24UNF	Rc1/8	16.0	15.0	2.5	13.0



NTK CUTTING TOOLS JAPAN

2808 Iwazaki, Komaki, Aichi 485-8510, Japan



www.ntkcuttingtools.com/global/contact/

