

AMX Chipbreaker

For External machining | CNC automatic lathes



Ensure chip control even with a cutting depth of 0.3mm or less

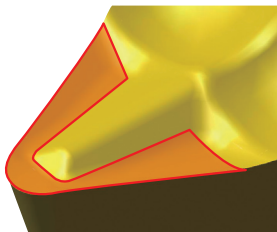
New Lineup expansion radius **R 0.03** for ultra-precision finishing

Features

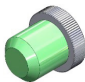
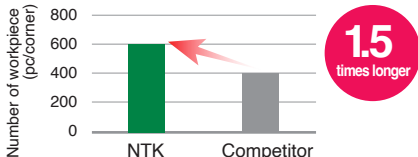
- Depth of cut ranges from 0.05 to 0.3 mm.
- Specialized for ultra-low depth of cut and low feed machining, ideal for high-precision parts processing.
- Adding corner radius R 0.03 for ultra-precision finishing.

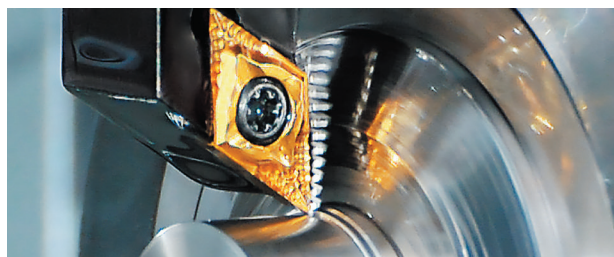
Sharp edge & double positive geometry

Excellent cutting performance, effective in suppressing burrs and improving machining accuracy.

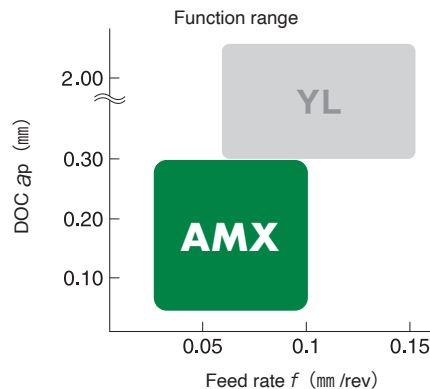


Practical example

Insert	DCGT11T302MAMX DM4	
Workpiece	S45C / C45 / 1045	
		
Cutting condition	Vc (m/min)	94
	Revolutions per minute (rpm)	2500
	Feed rate (mm/rev)	0.08
	DOC (mm)	0.2
	Coolant	WET
Results		



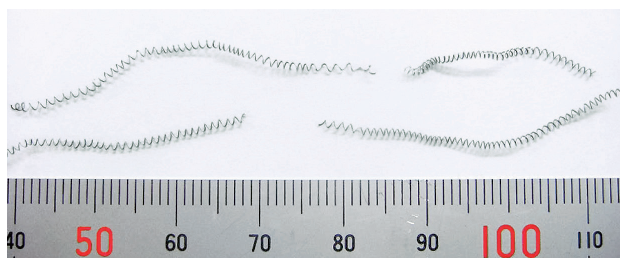
Ensure reliable chip control even with low depth of cut and low feed rate.



DOC 0.05 mm ~ , Feed 0.02 mm / rev ~ Outstanding chip control

Chip shape 《SUS304》

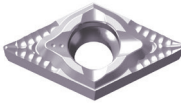
Vc=80m/min f=0.02mm/rev ap=0.05mm WET



Small curl diameter with stable chip control performance

Lineup

● NEW

Shape	Item number	PVD grade					Dimension			
		Metric	650	ST4	DM4	DT4	TM4	IC	Thickness	Corner Radius
	DCGT070200AMX			●			●	6.35	2.38	0.03
	DCGT070201MAMX		●	●	●	●	●	6.35	2.38	0.08
	DCGT070202MAMX		●	●	●	●	●	6.35	2.38	0.18
	DCGT070204MAMX			●	●	●	●	6.35	2.38	0.38
	DCGT11T300AMX				●		●	9.525	3.97	0.03
	DCGT11T301MAMX	●	●	●	●	●	●	9.525	3.97	0.08
	DCGT11T302MAMX	●	●	●	●	●	●	9.525	3.97	0.18
	DCGT11T304MAMX	●	●	●	●	●	●	9.525	3.97	0.38



NTK CUTTING TOOLS JAPAN

2808 Iwazaki, Komaki, Aichi 485-8510, Japan



CONTACT

www.ntkcuttingtools.com/global/contact/

