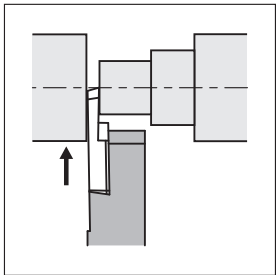
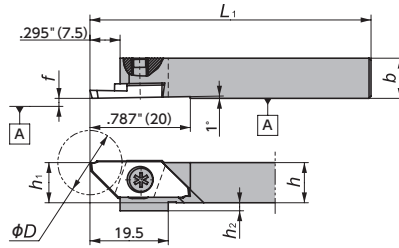


CTPA Series - Toolholders

Max. Cut-off Dia. - ϕ .630"(16.0mm)

CTPA

Screw Accessible from both sides

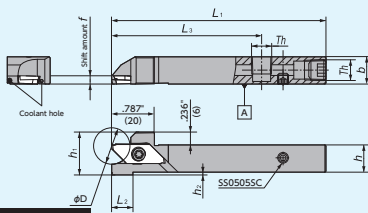


Right-Hand style shown

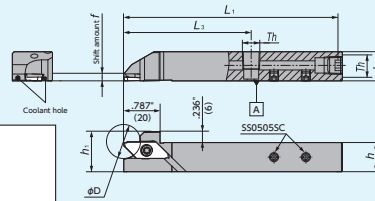
Figure-1

CTPA-OH2 (Coolant through)

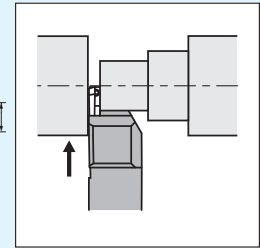
Screw Accessible from both sides



CTPA[®] 10X, CTPA[®] 16X



Th (Thread type)
 3/8" holder : M6x1
 1/2", 5/8" holder : NPT1/8
 Metric size holder : Rc1/8 (PT1/8)

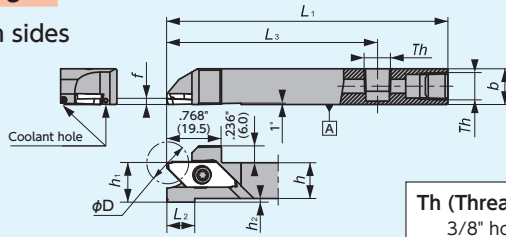


Right-Hand style shown

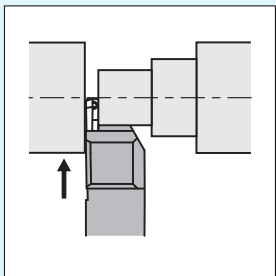
Figure-2 • Left-Hand holders are designed for Right-Hand machines

CTPA-OH (Coolant through)

Screw Accessible from both sides



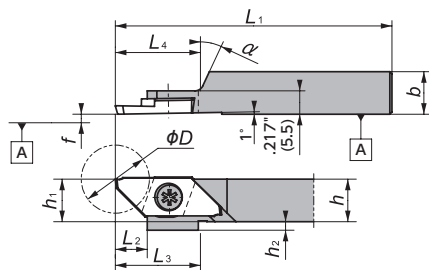
Th (Thread type)
 3/8" holder : M6x1
 1/2", 5/8" holder : NPT1/8
 Metric size holder : Rc1/8 (PT1/8)



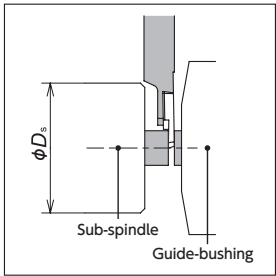
Right-Hand style shown

Figure-3 • Left-Hand holders are designed for Right-Hand machines

CTPAR-SUB



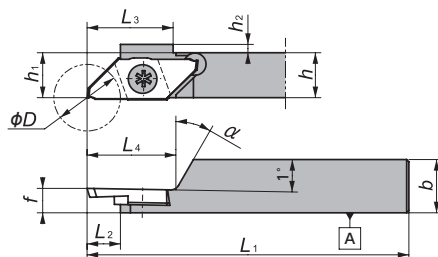
phi D_s
 CTPAR-SUB: ϕ 1.42" (ϕ 36mm)



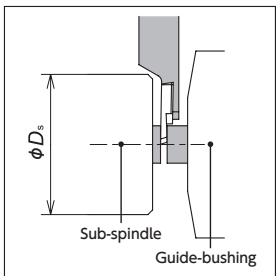
Sub-spindle
Guide-bushing

Figure-4

CTPAL-SUB




phi D_s
 CTPAL-SUB: ϕ 1.42" (ϕ 36mm)



Sub-spindle
Guide-bushing

Figure-5


CTPA

Gage Insert	Item Number	Figure	Stock		Max. Cut-off Dia. ϕD^*		h		h_1		b		L_1		h_2		L_2		L_3		Th	f		Clamp Screw	Wrench
			R	L	(Inch)	(mm)	(Inch)	(mm)	(Inch)	(mm)	(Inch)	(mm)	(Inch)	(mm)	(Inch)	(mm)	(Inch)	(mm)	(Inch)	(mm)		(Inch)	(mm)		
 CTPA FR./FL..	CTPA%106-IN	1	●	●	.630	16	3/8	3/8	3/8	4.724	120	.079	2	—	—	—	0.0	0.0	LRIS-4×10PW	CLR-15S					
	CTPA%108-IN	1	●	●	.630	16	1/2	1/2	1/2	4.724	120	0	0	—	—	—	0.0	0.0	LRIS-4×12PW	CLR-15S					
	CTPA%110-IN	1	●	●	.630	16	5/8	5/8	5/8	4.724	120	0	0	—	—	—	0.0	0.0	LRIS-4×12PW	CLR-15S					
	CTPA%110	1	○	○	.630	16	.394	10	.394	10	.394	10	4.724	120	.079	2	—	—	—	0.0	0.0	LRIS-4×10PW	CLR-15S		
	CTPA%112	1	●	●	.630	16	.472	12	.472	12	.472	12	4.724	120	0	0	—	—	—	0.0	0.0	LRIS-4×12PW	CLR-15S		
	CTPA%116	1	○	○	.630	16	.630	16	.630	16	.630	16	4.724	120	0	0	—	—	—	0.0	0.0	LRIS-4×12PW	CLR-15S		
	CTPA%120F	1	○	○	.630	16	.787	20	.787	20	.787	20	3.150	80	0	0	—	—	—	0.0	0.0	LRIS-4×10	LLR-25S		
	CTPA%106H-IN-OH	3	●	●	.630	16	3/8	.472	12	3/8	3.937	100	.176	4.475	.787	20	2.953	75	M6 × 1	0.0	0.0	LRIS-4×10PW	CLR-15S		
	CTPA%108H-IN-OH	3	■	■	.630	16	1/2	1/2	1/2	3.937	100	.051	1.3	.394	10	2.953	75	NPT1/8	0.0	0.0	LRIS-4×12PW	CLR-15S			
	CTPA%108H-IN-OH2	2	●	●	.630	16	1/2	1/2	1/2	3.937	100	.051	1.3	.394	10	2.756	70	NPT1/8	0.0	0.0	LRIS-4×12PW	CLR-15S			
	CTPA%110H-IN-OH	3	●	●	.630	16	5/8	5/8	5/8	3.937	100	0	0	—	2.953	75	NPT1/8	0.0	0.0	LRIS-4×12PW	CLR-15S				
	CTPA%110X-IN-OH2	2	●	●	.630	16	5/8	5/8	5/8	4.724	120	0	0	—	2.756	70	NPT1/8	0.0	0.0	LRIS-4×12PW	CLR-15S				
	CTPA%112H-OH	3	■	■	.630	16	.472	12	.472	12	.472	12	3.937	100	.079	2	.394	10	2.953	75	Rc1/8(PT1/8)	0.0	0.0	LRIS-4×12PW	CLR-15S
	CTPA%112H-OH2	2	●	●	.630	16	.472	12	.472	12	.472	12	3.937	100	.079	2	.394	10	2.756	70	Rc1/8(PT1/8)	0.0	0.0	LRIS-4×12PW	CLR-15S
CTPA%116H-OH	3	○	○	.630	16	.630	16	.630	16	.630	16	3.937	100	0	0	0	0	2.953	75	Rc1/8(PT1/8)	0.0	0.0	LRIS-4×12PW	CLR-15S	
CTPA%116X-OH2	2	●	●	.630	16	.630	16	.630	16	.630	16	4.724	120	0	0	0	0	2.756	70	Rc1/8(PT1/8)	0.0	0.0	LRIS-4×12PW	CLR-15S	

● Left-Hand coolant through holders are designed for Right-Hand machines


* Would be changed by insert

CTPAR-SUB

Gage Insert	Item Number	Figure	Stock		Max. Cut-off Dia. ϕD^*		h		h_1		b		L_1		h_2		L_2		L_3		L_4		α	f		Clamp Screw	Wrench
			R	L	(Inch)	(mm)	(Inch)	(mm)	(Inch)	(mm)	(Inch)	(mm)	(Inch)	(mm)	(Inch)	(mm)	(Inch)	(mm)	(Inch)	(mm)	(Inch)	(mm)					
 CTPA..FR..	CTPAR06-IN-SUB	4	●	●	.630	16	3/8	3/8	3/8	4.724	120	.079	2	.295	7.5	.768	19.5	.787	20	25°	0	0.0	LRIS-4×5	LLR-25S			
	CTPAR08-IN-SUB	4	●	●	.630	16	1/2	1/2	1/2	4.724	120	0	0	.295	7.5	.768	19.5	.787	20	25°	0	0.0	LRIS-4×5	LLR-25S			
	CTPAR10-IN-SUB	4	●	●	.630	16	5/8	5/8	5/8	4.724	120	0	0	.295	7.5	.768	19.5	.787	20	25°	0	0.0	LRIS-4×5	LLR-25S			
	CTPAR10GX-SUB	4	○	○	.630	16	.394	10	.394	10	.394	10	3.346	85	.079	2	.787	20	.768	19.5	.787	20	25°	0	0.0	LRIS-4×5	LLR-25S
	CTPAR12GX-SUB	4	○	○	.630	16	.472	12	.472	12	.472	12	3.346	85	0	0	.787	20	.768	19.5	.787	20	25°	0	0.0	LRIS-4×5	LLR-25S
	CTPAR12KX-SUB	4	○	○	.630	16	.472	12	.472	12	.472	12	4.724	120	0	0	.787	20	.768	19.5	.787	20	25°	0	0.0	LRIS-4×5	LLR-25S

* Would be changed by insert

CTPAL-SUB

Gage Insert	Item number	Figure	Stock		Max. Cut-off Dia. ϕD^*		h		h_1		b		L_1		h_2		L_2		L_3		L_4		α	f		Clamp screw	Wrench
			L	R	(Inch)	(mm)	(Inch)	(mm)	(Inch)	(mm)	(Inch)	(mm)	(Inch)	(mm)	(Inch)	(mm)	(Inch)	(mm)	(Inch)	(mm)							
 CTPA..FL..	CTPAL06-IN-SUB	5	●	●	.630	16	3/8	3/8	3/8	4.724	120	.079	2	.295	7.5	.768	19.5	.787	20	30°	.217	5.5	LRIS-4×5	LLR-25S			
	CTPAL08-IN-SUB	5	●	●	.630	16	1/2	1/2	1/2	4.724	120	0	0	.295	7.5	.768	19.5	.787	20	30°	.217	5.5	LRIS-4×5	LLR-25S			
	CTPAL10-IN-SUB	5	●	●	.630	16	5/8	5/8	5/8	4.724	120	0	0	.295	7.5	.768	19.5	.787	20	30°	.217	5.5	LRIS-4×5	LLR-25S			
	CTPAL10GX-SUB	5	○	○	.630	16	.394	10	.394	10	.394	10	3.346	85	.079	2	.787	20	.768	19.5	.787	20	30°	.217	5.5	LRIS-4×5	LLR-25S
	CTPAL12GX-SUB	5	○	○	.630	16	.472	12	.472	12	.472	12	3.346	85	0	0	.787	20	.768	19.5	.787	20	30°	.217	5.5	LRIS-4×5	LLR-25S
	CTPAL12KX-SUB	5	○	○	.630	16	.472	12	.472	12	.472	12	4.724	120	0	0	.787	20	.768	19.5	.787	20	30°	.217	5.5	LRIS-4×5	LLR-25S
	CTPAL16GX-SUB	5	○	○	.630	16	.630	16	.630	16	.630	16	3.346	85	0	0	1.102	28	.768	19.5	1.102	28	30°	.217	5.5	LRIS-4×5	LLR-25S

* Would be changed by insert

Cutting condition **➔S5**

Inserts (Right-hand) **➔S14** Inserts (Left-hand) **➔S15**

● : Stock
 ● : Stock (Newly added)
 ■ : While stocks last
 R L : Stock (Right / Left-hand only)
 R L : Stock (Right / Left-hand only, Newly added)
 ○ : 1-2 week delivery
 ○ : 1-2 week delivery (Newly added)
 ○ : 1-2 week delivery (Right / Left-hand only)
 ○ : 1-2 week delivery (Right / Left-hand only, Newly added)
 ● : Coolant through

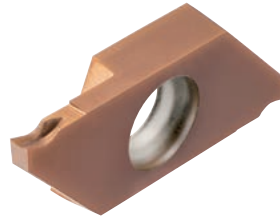
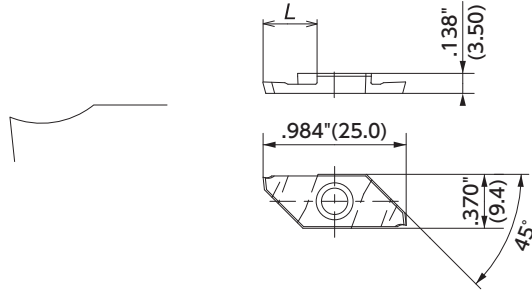
Cut-off

CTPA Series Inserts (Right-Hand)

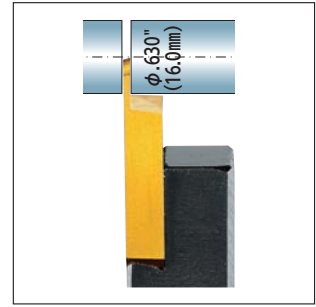
Two-sided insert

Max. Cut-off Dia. - ϕ .630"(16.0mm)

CTPA / CTPAX



CX-Chipbreaker



Right-Hand style shown

All angles shown are obtained when insert is set in the holder.

FR

Shape	Item Number	Figure	Chip-breaker	Max. Cut-off Dia. ϕD		w		L		θ	r_{e1}		Coated Carbide						Carbide	PCD
				(Inch)	(mm)	(Inch)	(mm)	(Inch)	(mm)		(Inch)	(mm)	ST4	DM4	DT4	QM3	VM1	ZM3		
Figure-1 	CTPA07FR	1	Yes	.315	8.0	.028	0.7	.177	4.5	16°	.002	0.05						●		
	CTPA10FR	1	Yes	.472	12.0	.039	1.0	.264	6.7	16°	.002	0.05				●	●	●		
	CTPA10FRFT	4	No	.472	12.0	.039	1.0	.264	6.7	20°	.002	0.05				●				
Figure-2 Flat top 	CTPA15FR	1	Yes	.630	16.0	.059	1.5	.362	9.2	16°	.002	0.05			●	●	●	●		
	CTPA15FR-CX	2	Yes-CX	.630	16.0	.059	1.5	.362	9.2	16°	.002	0.05	●	●						
Figure-3 Flat top 	CTPA15FR-TH	1	Yes	.630	16.0	.059	1.5	.362	9.2	16°	.002	0.05	●							
	CTPA15FRFT	4	No	.630	16.0	.059	1.5	.362	9.2	20°	.002	0.05				●				
Figure-4 Flat top 	CTPA20FR	1	Yes	.630	16.0	.079	2.0	.362	9.2	16°	.002	0.05			●	●	●	●		
	CTPA20FR-TH	1	Yes	.630	16.0	.079	2.0	.362	9.2	16°	.002	0.05	●							
	CTPA20FRV	3	No	.630	16.0	.079	2.0	.362	9.2	20°	0.0	0.0					○	●		

FRN

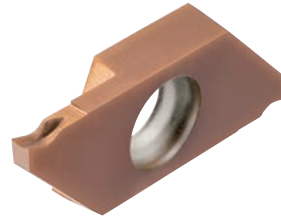
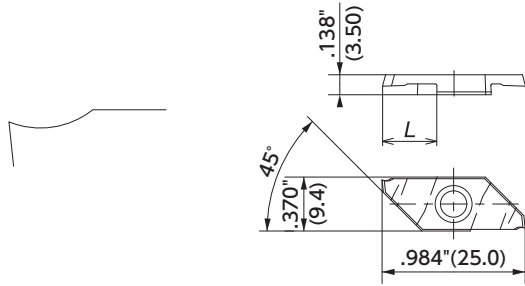
Shape	Item Number	Figure	Chip-breaker	Max. Cut-off Dia. ϕD		w		L		θ	r_{e1}		Coated Carbide						Carbide	PCD
				(Inch)	(mm)	(Inch)	(mm)	(Inch)	(mm)		(Inch)	(mm)	ST4	DM4	DT4	QM3	VM1	ZM3		
Figure-1 	CTPA07FRN	1	Yes	.315	8.0	.028	0.7	.177	4.5	0°	.002	0.05						●		
	CTPA10FRN	1	Yes	.472	12.0	.039	1.0	.264	6.7	0°	.002	0.05				●		●		
	CTPA10FRS	3	No	.630	16.0	.039	1.0	.362	9.2	0°	.002	0.05				●				
Figure-2 	CTPA15FRN	1	Yes	.630	16.0	.059	1.5	.362	9.2	0°	.002	0.05			●	●	●	●		
	CTPA15FRN-CX	2	Yes-CX	.630	16.0	.059	1.5	.362	9.2	0°	.002	0.05	●	●						
Figure-3 Flat top 	CTPA15FRN-TH	1	Yes	.630	16.0	.059	1.5	.362	9.2	0°	.002	0.05	●							
	CTPA15FRS	3	No	.630	16.0	.059	1.5	.362	9.2	0°	.002	0.05				●				
Figure-4 PCD tipped 	CTPA20FRN	1	Yes	.630	16.0	.079	2.0	.362	9.2	0°	.002	0.05			●	●	●	●		
	CTPA20FRN-TH	1	Yes	.630	16.0	.079	2.0	.362	9.2	0°	.002	0.05	●							
	CTPA20FRS	3	No	.630	16.0	.079	2.0	.362	9.2	0°	.002	0.05				●		○		
CTPA20FRNV	3	No	.630	16.0	.079	2.0	.362	9.2	0°	0.0	0.0						●			
CTPA20FRN-P	4	Yes	.630	16.0	.079	2.0	.362	9.2	0°	.004	0.1								○	
CTPA30FRN	1	Yes	.630	16.0	.118	3.0	.362	9.2	0°	.002	0.05				○					

CTPA Series Inserts (Left-Hand)

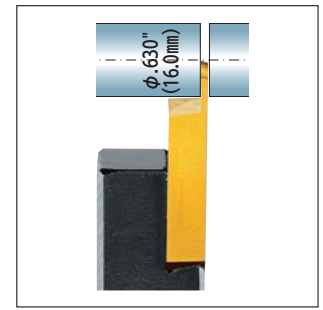
Two-sided insert

Max. Cut-off Dia. - ϕ .630" (16.0mm)

CTPA / CTPAX



CX-Chipbreaker
(Right-hand shown)



Left-Hand style shown

All angles shown are obtained when insert is set in the holder.

FLK

Shape	Item Number	Figure	Chip-breaker	Max. Cut-off Dia. ϕD		w		L		θ	$r_{\epsilon 1}$		Coated Carbide						Carbide	PCD					
				(Inch)	(mm)	(Inch)	(mm)	(Inch)	(mm)		(Inch)	(mm)	ST4	DM4	DT4	QM3	VM1	ZM3			KM1	PD1			
Figure-1 	CTPA07FLK	1	Yes	.256	6.5	.028	0.7	.177	4.5	16°	.002	0.05													
	CTPA10FLK	1	Yes	.433	11.0	.039	1.0	.264	6.7	16°	.002	0.05													
	CTPA10FLKD	1	Yes	.630	16.0	.039	1.0	.362	9.2	16°	.002	0.05													
	CTPA10FLKFT	3	No	.472	12.0	.039	1.0	.311	7.9	16°	.0	0.0													
Figure-2 	CTPA15FLK	1	Yes	.571	14.5	.059	1.5	.362	9.2	16°	.002	0.05													
	CTPA15FLK-CX	2	Yes-CX	.571	14.5	.059	1.5	.362	9.2	16°	.002	0.05	●	●											
	CTPA15FLK-TH	1	Yes	.571	14.5	.059	1.5	.362	9.2	16°	.002	0.05	●	●											
Figure-3 Flat top 	CTPA15FLKFT	3	No	.630	16.0	.059	1.5	.394	10.0	16°	0.0	0.0													
	CTPA15FLKV ^M	3	No	.571	14.5	.059	1.5	.362	9.2	20°	0.0	0.0													
	CTPA20FLK	1	Yes	.571	14.5	.079	2.0	.362	9.2	16°	.002	0.05													
	CTPA20FLK-TH	1	Yes	.571	14.5	.079	2.0	.362	9.2	16°	.002	0.05	●	●											
Figure-3 Flat top 	CTPA20FLKV ^M	3	No	.571	14.5	.079	2.0	.362	9.2	20°	0.0	0.0													

FLN

Shape	Item Number	Figure	Chip-breaker	Max. Cut-off Dia. ϕD		w		L		θ	$r_{\epsilon 1}$		Coated Carbide						Carbide	PCD					
				(Inch)	(mm)	(Inch)	(mm)	(Inch)	(mm)		(Inch)	(mm)	ST4	DM4	DT4	QM3	VM1	ZM3			KM1	PD1			
Figure-1 	CTPA10FLN	1	Yes	.472	12.0	.039	1.0	.264	6.7	0°	.002	0.05													
	CTPA10FLND	1	Yes	.630	16.0	.039	1.0	.362	9.2	0°	.002	0.05													
	CTPA10FLS	3	No	.630	16.0	.039	1.0	.362	9.2	0°	.002	0.05													
Figure-2 	CTPA15FLN	1	Yes	.630	16.0	.059	1.5	.362	9.2	0°	.002	0.05													
	CTPA15FLN-CX	2	Yes-CX	.630	16.0	.059	1.5	.362	9.2	0°	.002	0.05	●	●											
	CTPA15FLN-TH	1	Yes	.630	16.0	.059	1.5	.362	9.2	0°	.002	0.05	●	●											
Figure-3 Flat top 	CTPA15FLS	3	No	.630	16.0	.059	1.5	.362	9.2	0°	.002	0.05													
	CTPA20FLN	1	Yes	.630	16.0	.079	2.0	.362	9.2	0°	.002	0.05													
	CTPA20FLN-TH	1	Yes	.630	16.0	.079	2.0	.362	9.2	0°	.002	0.05	●	●											
	CTPA20FLS	3	No	.630	16.0	.079	2.0	.362	9.2	0°	.002	0.05													
Figure-4 PCD tipped 	CTPA20FLNV ^M	3	No	.630	16.0	.079	2.0	.362	9.2	0°	0.0	0.0													
	CTPA20FLN-P	4	Yes	.630	16.0	.079	2.0	.362	9.2	0°	.004	0.1													
	CTPA30FLN	1	Yes	.630	16.0	.118	3.0	.362	9.2	0°	.002	0.05													

FL

Shape	Item Number	Figure	Chip-breaker	Max. Cut-off Dia. ϕD		w		L		θ	$r_{\epsilon 1}$		Coated Carbide						Carbide	PCD					
				(Inch)	(mm)	(Inch)	(mm)	(Inch)	(mm)		(Inch)	(mm)	ST4	DT4	QM3	VM1	ZM3	KM1			PD1				
Figure-1 	CTPA07FL	1	Yes	.315	8.0	.028	0.7	.177	4.5	16°	.002	0.05													
	CTPA10FL	1	Yes	.472	12.0	.039	1.0	.264	6.7	16°	.002	0.05													
Figure-2 Flat top 	CTPA15FL	1	Yes	.630	16.0	.059	1.5	.362	9.2	16°	.002	0.05													
	CTPA20FL	1	Yes	.630	16.0	.079	2.0	.362	9.2	16°	.002	0.05													
	CTPA20FLV ^M	2	No	.630	16.0	.079	2.0	.362	9.2	20°	0.0	0.0													

Holders →S12

Tool selection guide →S4

Cutting Condition →S5

● : Stock
● : Stock (Newly added)
■ □ □ : While stocks last

R L : Stock (Right / Left-hand only)
R L : Stock (Right / Left-hand only, Newly added)
M : Mirror finish

○ : 1-2 week delivery
○ : 1-2 week delivery (Newly added)
● : Coolant through

Ⓡ Ⓛ : 1-2 week delivery (Right / Left-hand only)
Ⓡ Ⓛ : 1-2 week delivery (Right / Left-hand only, Newly added)