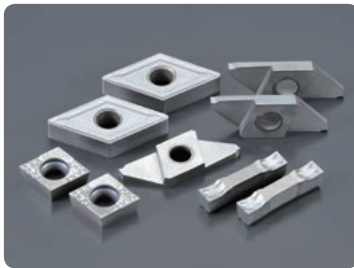


PVD Coatings

QM3/Q15

Q-Coat

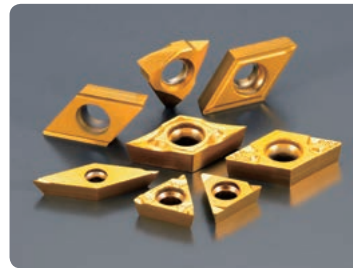


Best wear resistance

- stainless steel
- Carbon steel
- Alloy steel

TM4

TM-Coat

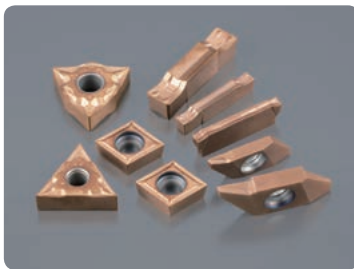


Best balance of wear resistance and adhesion resistance

- For small part machining in general

DM4

DM-Coat

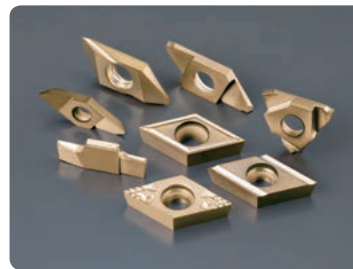


Best heat resistance

- Heat resistant alloy
- Stainless steel
- Hardened material

DT4

DT-Coat

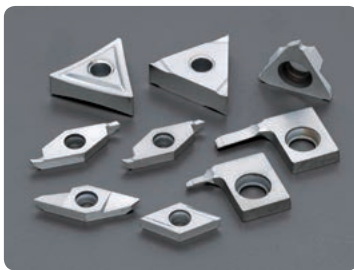


Best balance of heat resistance and sharp edges

- Titanium alloy
- Heat resistant alloy
- Stainless steel
- Hardened material

VM1

V-Coat



Best edge sharpness

- Titanium alloy
- Non-ferrous material
- Stainless steel
- Plastic

ZM3/C7Z

Z-Coat



Best adhesion resistance

- General purpose machining

Coating Specifications

	Q-Coat	TM-Coat	DM-Coat	DT-Coat	V-Coat	Z-Coat
Thickness	Thick	Thin	Thick	Thin	Thin	Thick
Wear Resistance	◎	○	○	○	○	
Heat Resistance			◎	◎		○
Adhesion Resistance		○				◎
Edge Sharpness		○		○	◎	
Composition	TiCN	Multilayer	Multilayer	Multilayer	TiCN	TiN

◎1st choice ○2nd choice